



1347 RBI-TD



EN 14439-C25
2000/14/CE



ULTRALIFT



Simple setup



FM-Link



Power Control



ASsys



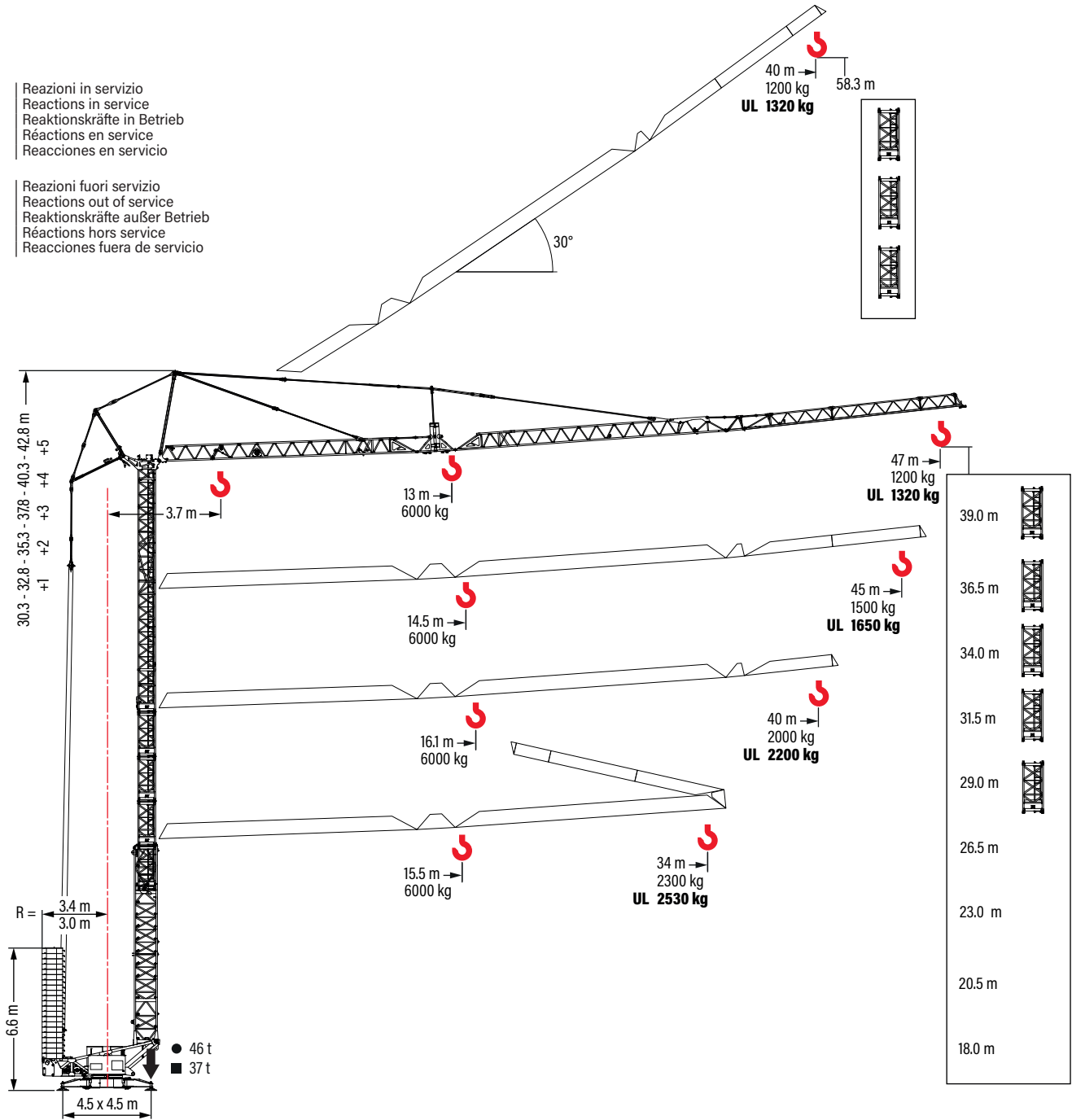
ACsys

1347 RBI-TD

Funzionamento

Operation - Betrieb - Exploitation - Accionamiento

- Reazioni in servizio
Reactions in service
Reaktionskräfte in Betrieb
Réactions en service
Reacciones en servicio
- Reazioni fuori servizio
Reactions out of service
Reaktionskräfte außer Betrieb
Réactions hors service
Reacciones fuera de servicio



Zavorra di base

Base ballast - Grundballast - Lest de base - Lastre de base

ht (m)	R (m)	Z
26.5	3.0	21x2.0 t = 42.0 t
39	3.0	22x2.0 t = 44.0 t
26.5	3.4	20x2.0 t = 40.0 t
39	3.4	21x2.0 t = 42.0 t

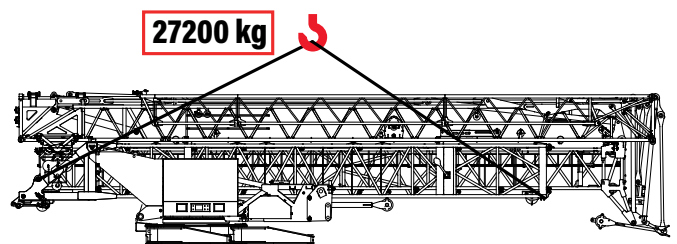





Diagramma di portate

Load diagram - Lastkurven - Courbes de charges - Curvas de cargas

 **5°**

		m	3.7	11	13	15	17	19	21	23	25	27	29	31	33	34	35	37	39	40	41	43	45	47
																								
47.0 m	6.0 t - 13.0 m	t	6.00		4.97	4.24	3.69	3.26	2.91	2.63	2.39	2.19	2.02	1.87	1.80	1.74	1.62	1.52	1.47	1.43	1.34	1.27	1.20	
		t	6.00		5.47	4.67	4.06	3.59	3.21	2.89	2.63	2.41	2.22	2.06	1.98	1.91	1.79	1.67	1.62	1.57	1.48	1.40	1.32	UL
45.0 m	6.0 t - 14.5 m	t	6.00		5.77	4.93	4.29	3.80	3.40	3.07	2.80	2.57	2.37	2.19	2.12	2.04	1.91	1.79	1.74	1.68	1.59	1.50		
		t	6.00		5.42	4.72	4.17	3.74	3.38	3.08	2.82	2.60	2.41	2.33	2.25	2.10	1.97	1.91	1.85	1.75	1.65	UL		
40.0 m	6.0 t - 16.1 m	t	6.00		5.62	4.90	4.34	3.88	3.51	3.20	2.94	2.72	2.52	2.43	2.35	2.20	2.06	2.00						
		t	6.00		5.39	4.77	4.27	3.86	3.52	3.24	2.99	2.77	2.67	2.58	2.42	2.27	2.20	UL						
34.0 m	6.0 t - 15.5 m	t	6.00		5.33	4.65	4.11	3.68	3.33	3.04	2.79	2.57	2.38	2.30										
		t	6.00		5.86	5.11	4.52	4.05	3.66	3.34	3.06	2.83	2.62	2.53	UL									

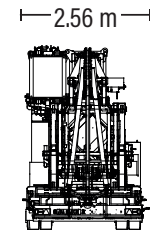
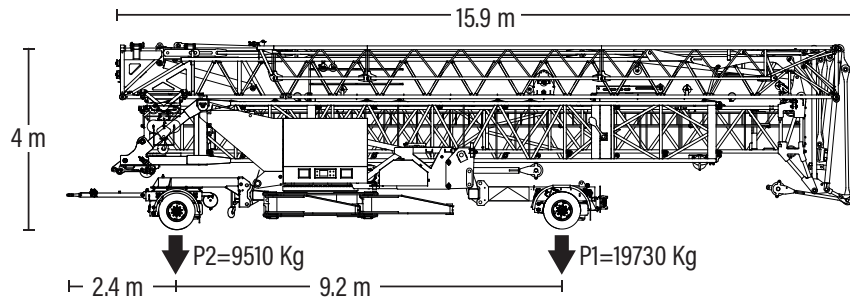
 **30°**

		m	3.7	11	13	15	17	19	21	23	25	27	28.5	29	31	33	34	35	37	38.5	39	40	
																							
40.0 m	3.0 t - 19.3 m	t			3.00				2.71	2.41	2.18	1.98	1.89	1.81	1.66	1.54	1.48	1.42	1.33	1.28	1.24	1.20	
		t			3.00				2.98	2.66	2.39	2.17	2.08	1.99	1.83	1.69	1.63	1.57	1.46	1.41	1.36	1.32	UL
38.5 m	3.0 t - 22 m	t			3.00				2.84	2.56	2.33	2.23	2.13	1.96	1.82	1.75	1.69	1.58	1.50				
		t			3.00				2.81	2.56	2.45	2.35	2.16	2.00	1.93	1.86	1.73	1.65	UL				
34.0 m	3.0 t - 24.4 m	t			3.00				2.91	2.65	2.53	2.43	2.24	2.07	2.00								
		t			3.00				2.91	2.79	2.67	2.46	2.28	2.20	UL								

1347 RBI-TD

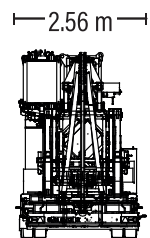
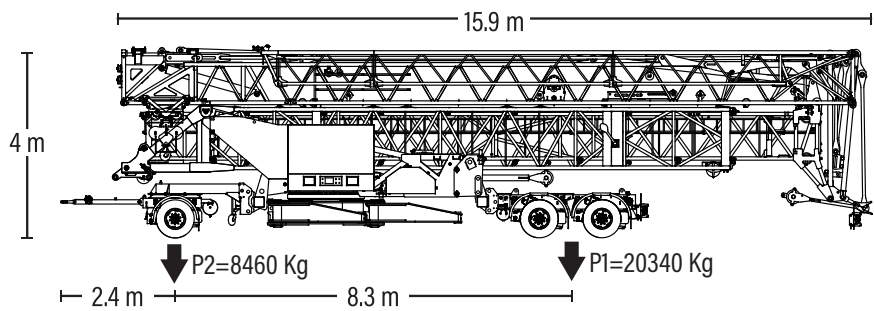
Trasporto

Transport - Transport - Transport - Transporte

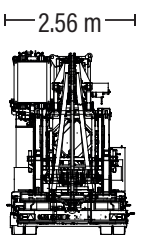
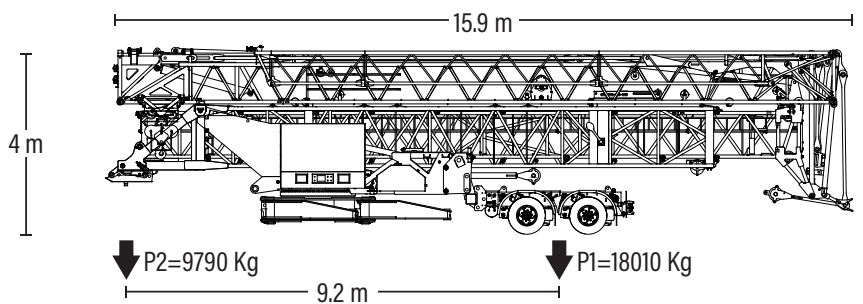


5 Km/h

29240 Kg




80 Km/h

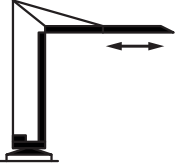


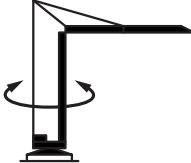
80 Km/h



Meccanismi

Mechanisms - Antriebe - mécanismes - Mecanismos

	V20.47 15 kW		m/min	9	19	28	37	47	
			t	3.0	3.0	2.7	2.0	1.5	
			m/min	5	10	14	19	24	
			t	6.0	6.0	5.4	4.0	3.0	

	0 <-> 55 m/min 5.5 kW
-----------------------------------------------------------------------------------	--------------------------

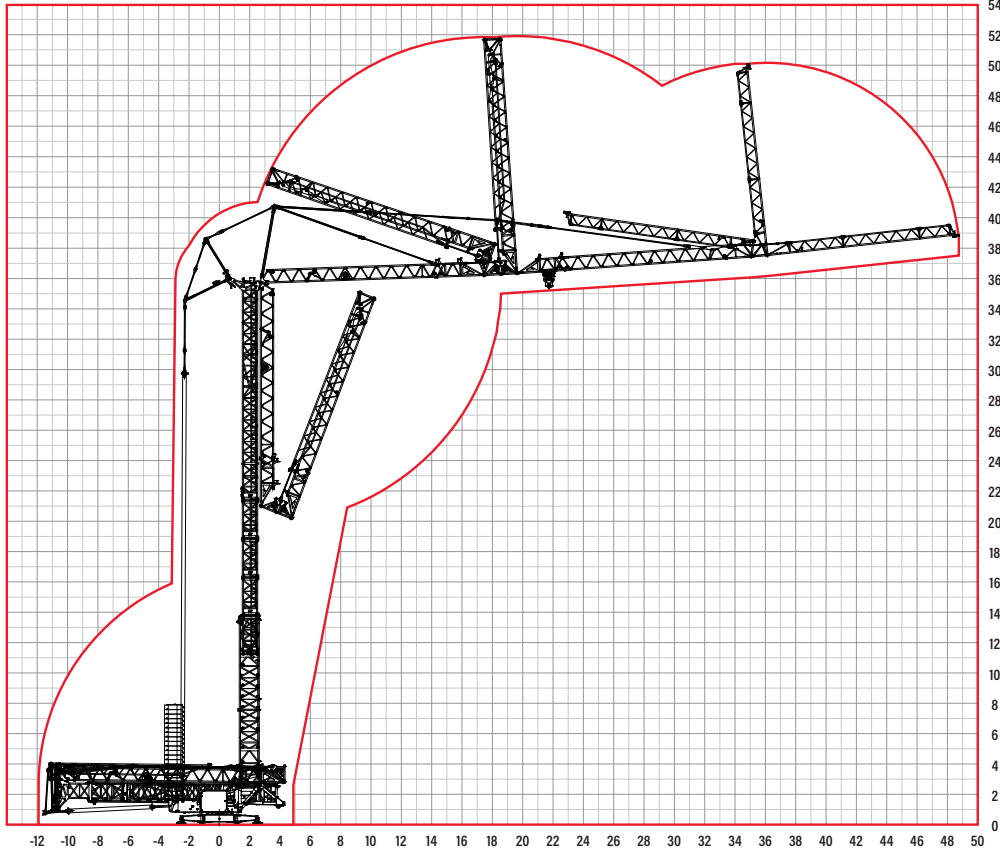
	0 <-> 0.7 rpm 2 x 3 kW
-----------------------------------------------------------------------------------	---------------------------

	400 V - 50 Hz: 30 kVA 
-------------------------------------------------------------------------------------	-----------------------------------------------------------------------------------------------------------

1347 RBI-TD

Montaggio

Erection- Montage - Montage - Montaje



Documento commerciale non contrattuale.
Per tutte le informazioni tecniche riferirsi
alle corrispondenti istruzioni.





This commercial document is not legally
binding. For any technical information,
please refer to the corresponding
instructions.

Unverbindliches Vertriebsdokument.
Für technische Informationen, siehe die
entsprechenden Anweisungen.

Ce document commercial n'est pas
juridiquement contraignant. Pour toute
information technique, veuillez vous référer
aux instructions correspondantes.

Documento comercial no contractual.
Para cualquier información técnica, ver la
noticia correspondiente.



	IT	EN	DE	FR	ES
	Sollevamento	Hoisting	Heben	Levage	Elevación
	Traslazione carrello	Trolleying	Katzfahren	Distribution	Distribución
	Rotazione	Slewing	Schwenken	Orientation	Orientació
Ht	Altezza torre	Tower height	Höhe des Turms	Hauteur de la tour	Altura de torre
Hg	Altezza sotto gancio	Under hook height	Höchste Hakenhöhe	Hauteur maxi. sous crochet	Maxima altura bajo gancho
	Braccio	Jib	Ausleger	Flèche	Pluma
	Alimentazione	Power supply	Stromversorgung	Alimentation	Alimentación
	Trasporto	Transport	Transport	Transport	Transporte
	Peso	Weight	Gewicht	Poids	Peso



Documento commerciale non contrattuale. Per tutte le informazioni tecniche riferirsi alle corrispondenti istruzioni.

This commercial document is not legally binding. For any technical information, please refer to the corresponding instructions.

Unverbindliches Vertriebsdokument. Für technische Informationen, siehe die entsprechenden Anweisungen.

Ce document commercial n'est pas juridiquement contraignant. Pour toute information technique, veuillez vous référer aux instructions correspondantes.

Documento commercial no contractual. Para cualquier información técnica, ver la noticia correspondiente.