



1131 RBI



EN 14439-C25
2000/14/CE



Simple setup



FM-Link



Power Control



ASsys

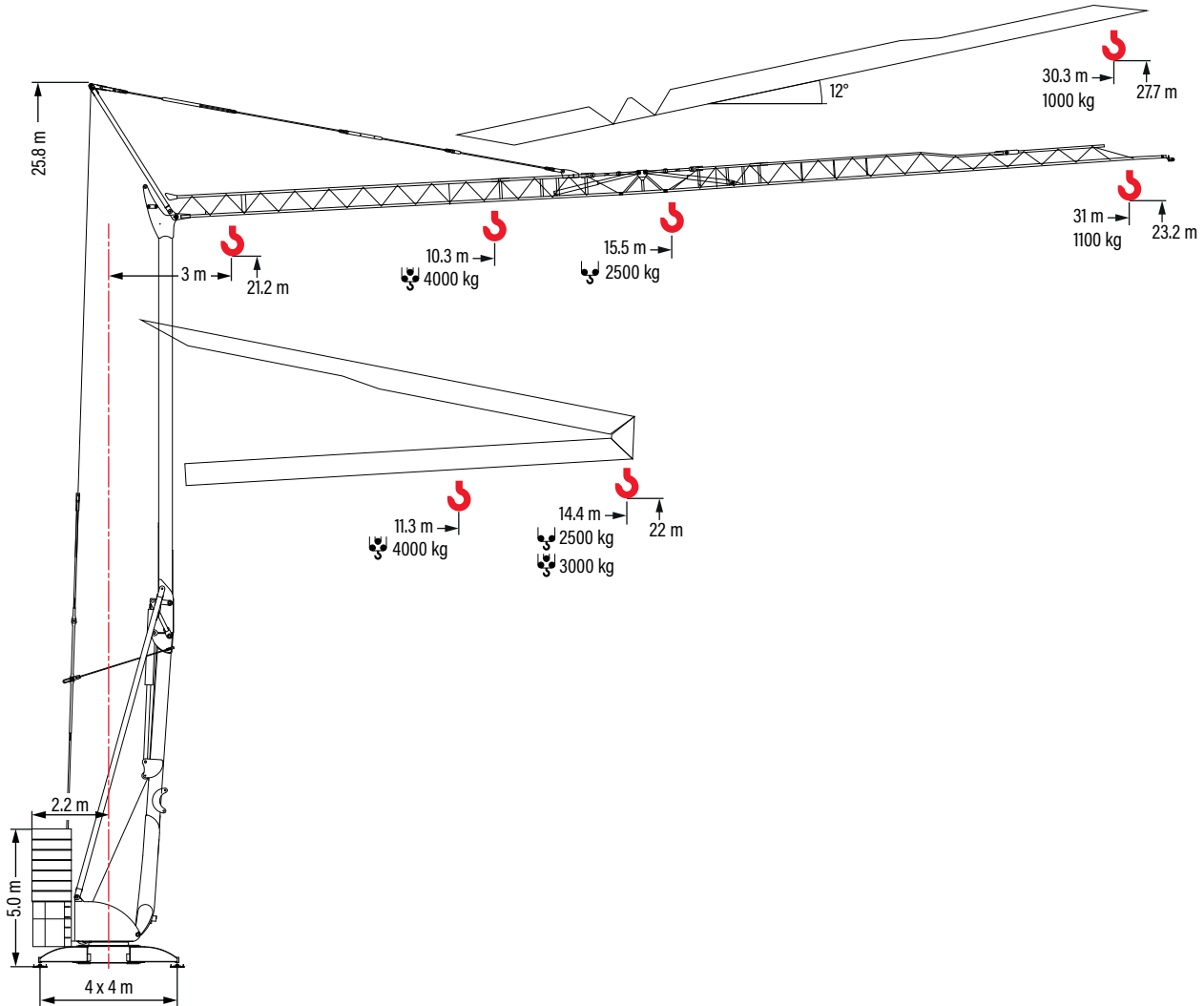


ACsys

1131 RBI

Funzionamento

Operation - Betrieb - Exploitation - Accionamiento



Pesi e reazioni

Weights and reactions - Gewichte und Reaktionen - Poids et réactions - Pesos y reacciones

- Reazioni in servizio
Reactions in service
Reaktionskräfte in Betrieb
Réactions en service
Reacciones en servicio
- Reazioni fuori servizio
Reactions out of service
Reaktionskräfte außer Betrieb
Réactions hors service
Reacciones fuera de servicio

7 x 2400 kg	13 x 1250 kg
2 x 1300 kg	2 x 1300 kg
2 x 2200 kg	2 x 2200 kg
Tot = 23800 kg	Tot = 23250 kg

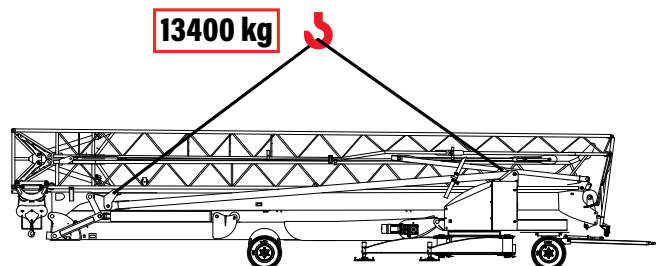
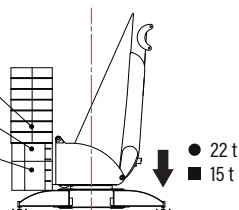


Diagramma di portate

Load diagram - Lastkurven - Courbes de charges - Curvas de cargas

5°

		m	3	10	12	14	14.4	16	18	20	22	24	26	28	30	31
31.0 m	2500 kg - 15.5 m	kg			2500			2450	2160	1870	1680	1500	1370	1240	1150	1100
14.4 m	2500 kg - 14.4 m	kg			2500											

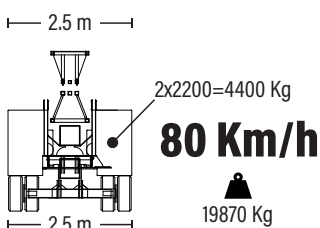
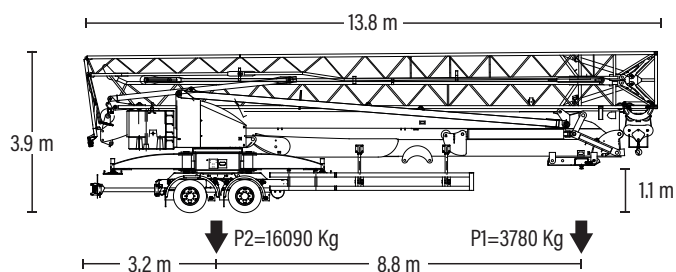
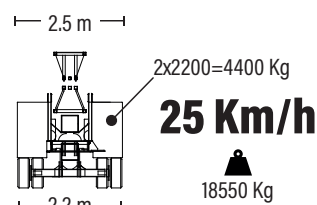
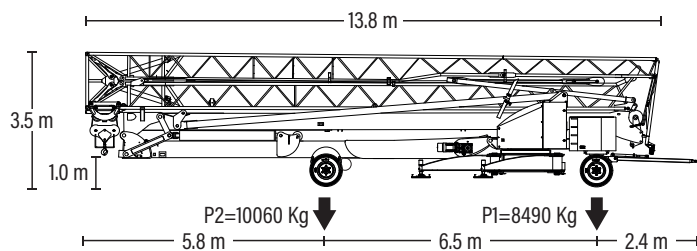
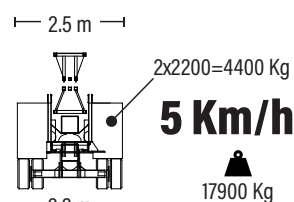
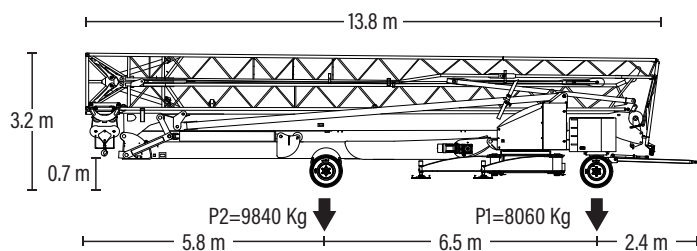
		m	3	10	12	14	14.4	16	18	20	22	24	26	28	30	31
31.0 m	4000 kg - 10.3 m	kg	4000		3290	2790	2690	2290	2010	1740	1560	1380	1260	1140	1050	1000
14.4 m	4000 kg - 11.3 m	kg	4000		3770	3130	3000									

12°

		m	3	30.3
30.3 m	1000 kg - 30.3 m	kg	1000	

Trasporto



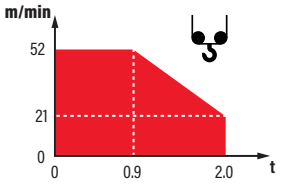
Transport - Transport - Transport - Transporte




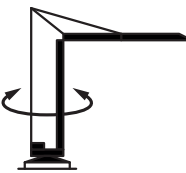
1131 RBI



Meccanismi

Mechanisms - Antriebe - mécanismes - Mecanismos

	V15.45 11 kW		m/min	4	21	46	52	
			t	2.5	2.5	1.1	0.9	
			m/min	2	10.5	23	26	
			t	4.0	4.0	2.0	1.8	

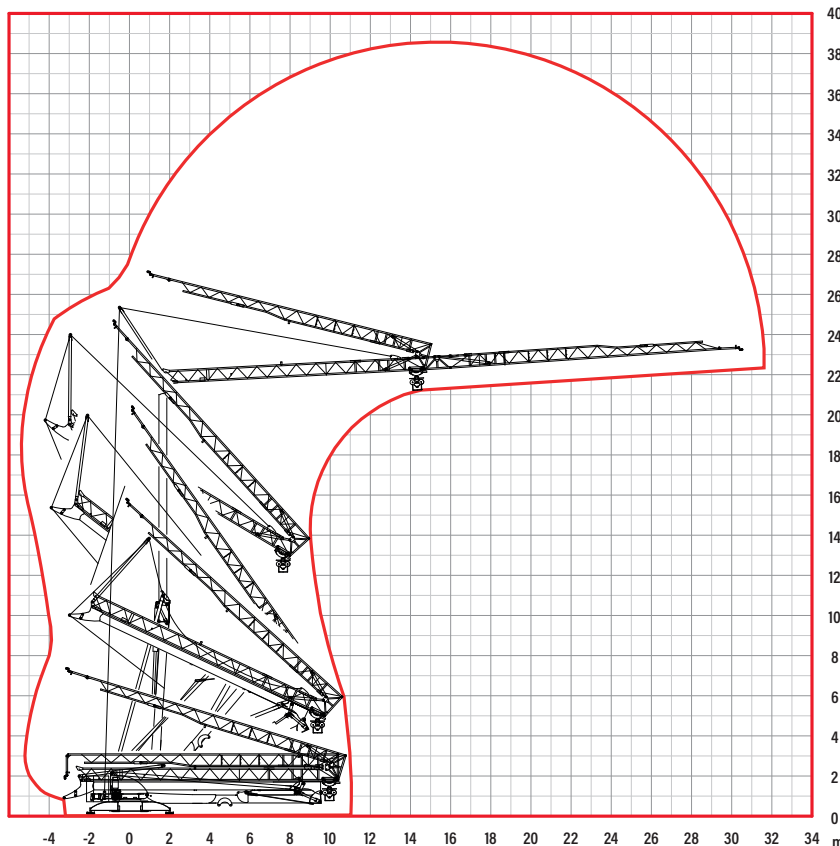
	0 <-> 45 m/min 3 kW
---	------------------------

	0 <-> 0.8 rpm 2.2 kW
---	-------------------------

	400 V - 50 Hz		
	V15.45	20 kVA	

Montaggio

Erection- Montage - Montage - Montaje



Documento commerciale non contrattuale.
Per tutte le informazioni tecniche riferirsi
alle corrispondenti istruzioni.


This commercial document is not legally
binding. For any technical information,
please refer to the corresponding
instructions.

Unverbindliches Vertriebsdokument.
Für technische Informationen, siehe die
entsprechenden Anweisungen.

Ce document commercial n'est pas
juridiquement contraignant. Pour toute
information technique, veuillez vous référer
aux instructions correspondantes.

Documento comercial no contractual.
Para cualquier información técnica, ver la
noticia correspondiente.



 Eco power: tecnologia risparmio consumi