

A large, light gray silhouette of a tower crane, showing the vertical mast, the horizontal jib, and the hook assembly, set against a white background.

724 RBI-V1



EN 14439-C25
2000/14/CE



Simple setup



FM-Link



Power Control



ASsys

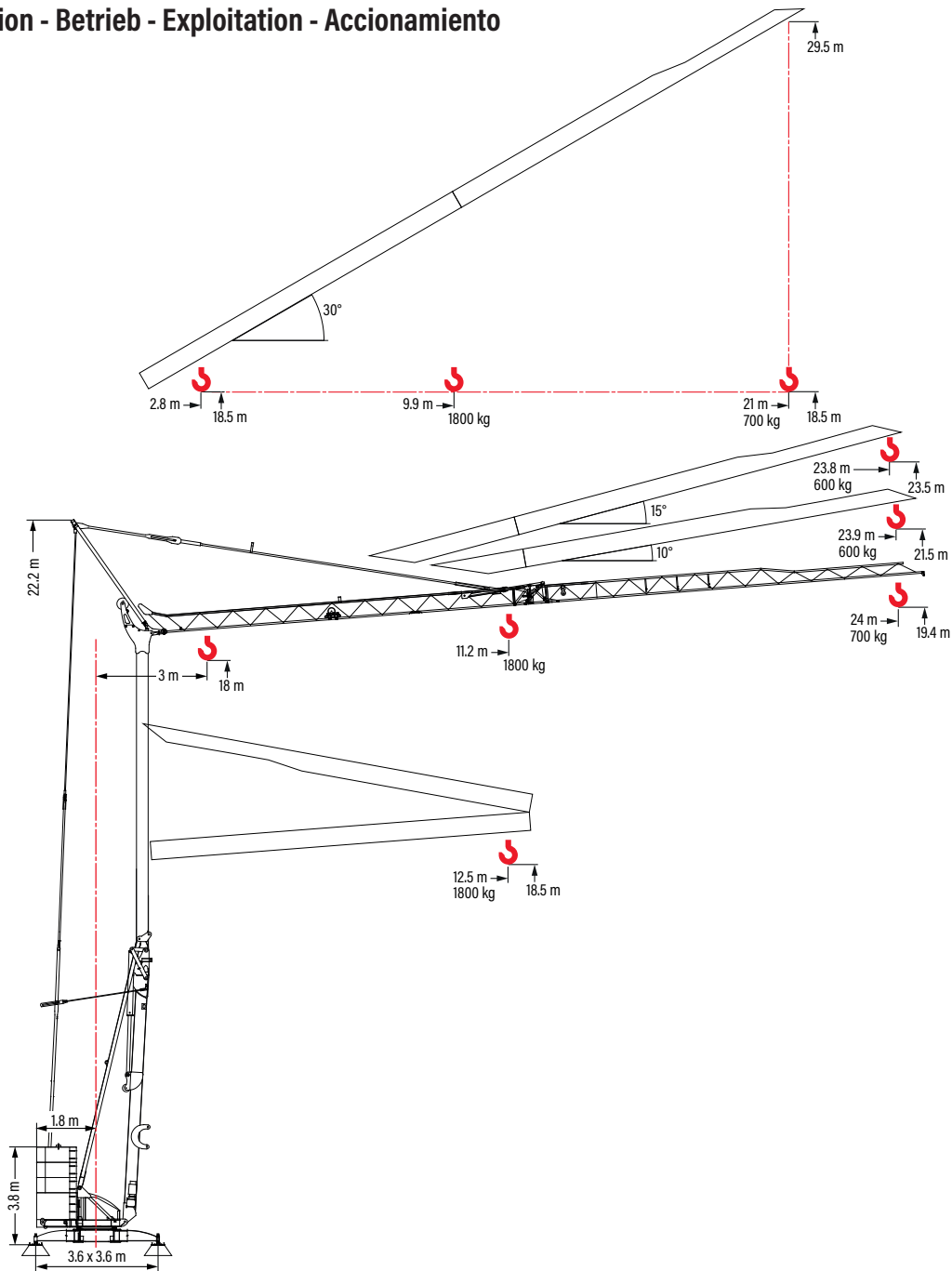


ACsys

724 RBI-V1

Funzionamento

Operation - Betrieb - Exploitation - Accionamiento



Pesi e reazioni

Weights and reactions - Gewichte und Reaktionen - Poids et réactions - Pesos y reacciones

- Reazioni in servizio
Reactions in service
Reaktionskräfte in Betrieb
Réactions en service
Reacciones en servicio
- Reazioni fuori servizio
Reactions out of service
Reaktionskräfte außer Betrieb
Réactions hors service
Reacciones fuera de servicio

25 km/h	5 km/h
6 x 1500 kg	6 x 1300 kg
2 x 1550 kg	2 x 2200 kg
Tot = 12100 kg	Tot = 12200 kg

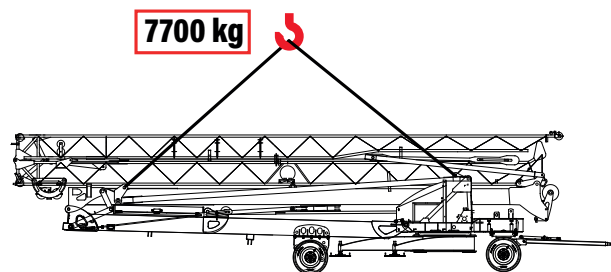
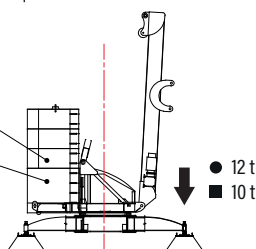


Diagramma di portate

Load diagram - Lastkurven - Courbes de charges - Curvas de cargas

5°

230-400 V	m	3	10	12	12.5	14	16	18	20	22	24
24.0 m	1800 kg - 11.2 m	kg	1800	1650	1590	1400	1160	1020	880	790	700
12.5 m	1800 kg - 12.5 m	kg	1800								

10°

230-400 V	m	3	23.9
23.9 m	600 kg - 23.9 m	kg	600

15°

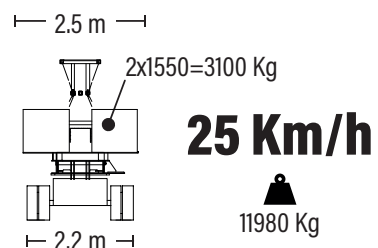
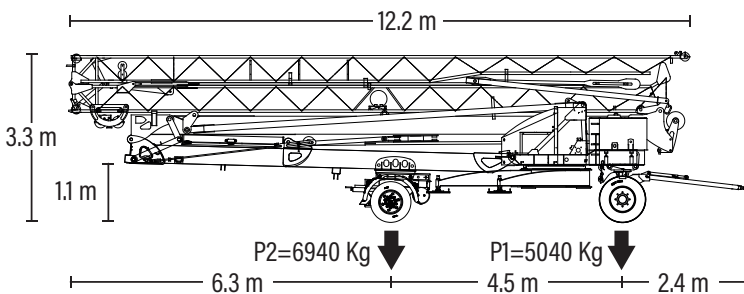
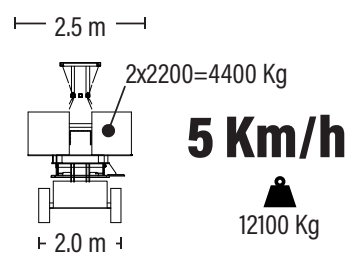
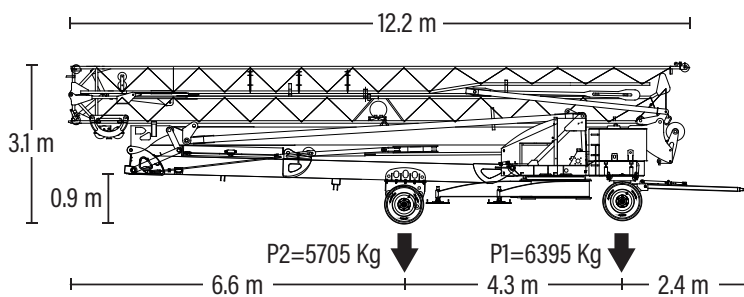
230-400 V	m	3	23.8
23.8 m	600 kg - 23.8 m	kg	600

30°

230-400 V	m	3	10	12	14	16	18	20	21	
21.0 m	1800 kg - 9.9 m	kg	1800	1780	1410	1170	990	850	750	700

Trasporto


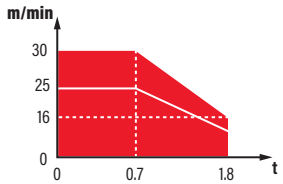
Transport - Transport - Transport - Transporte

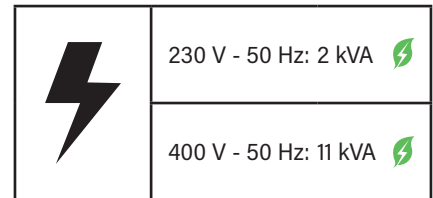
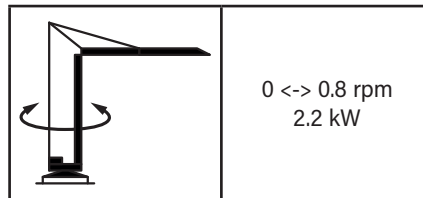
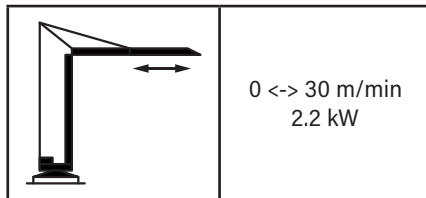


724 RBI-V1

Meccanismi

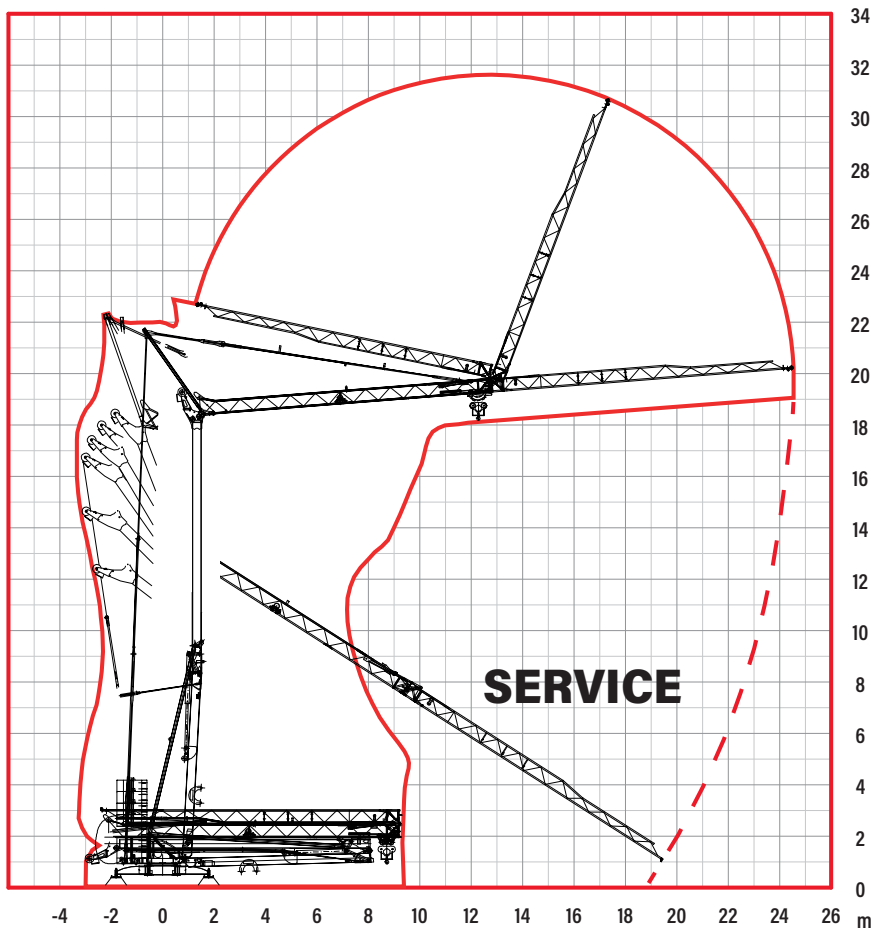
Mechanisms - Antriebe - mécanismes - Mecanismos

	V7,5.30 5.5 kW						
		400 V	m/min	4	16		30
			t	1.8	1.8		0.7
		230 V	m/min	↑ 4	11		25
t	↓ 4		16	30			
		t	1.8	1.8	0.7		



Montaggio

Erection - Montage - Montage - Montaje



Documento commerciale non contrattuale.
Per tutte le informazioni tecniche riferirsi alle corrispondenti istruzioni.

This commercial document is not legally binding. For any technical information, please refer to the corresponding instructions.

Unverbindliches Vertriebsdokument.
Für technische Informationen, siehe die entsprechenden Anweisungen.

Ce document commercial n'est pas juridiquement contraignant. Pour toute information technique, veuillez vous référer aux instructions correspondantes.

Documento comercial no contractual.
Para cualquier información técnica, ver la noticia correspondiente.



 Eco power: tecnologia risparmio consumi