



# 828 RBI-V1



EN 14439-C25  
2000/14/CE



Simple setup



FM-Link



Power Control



ASsys

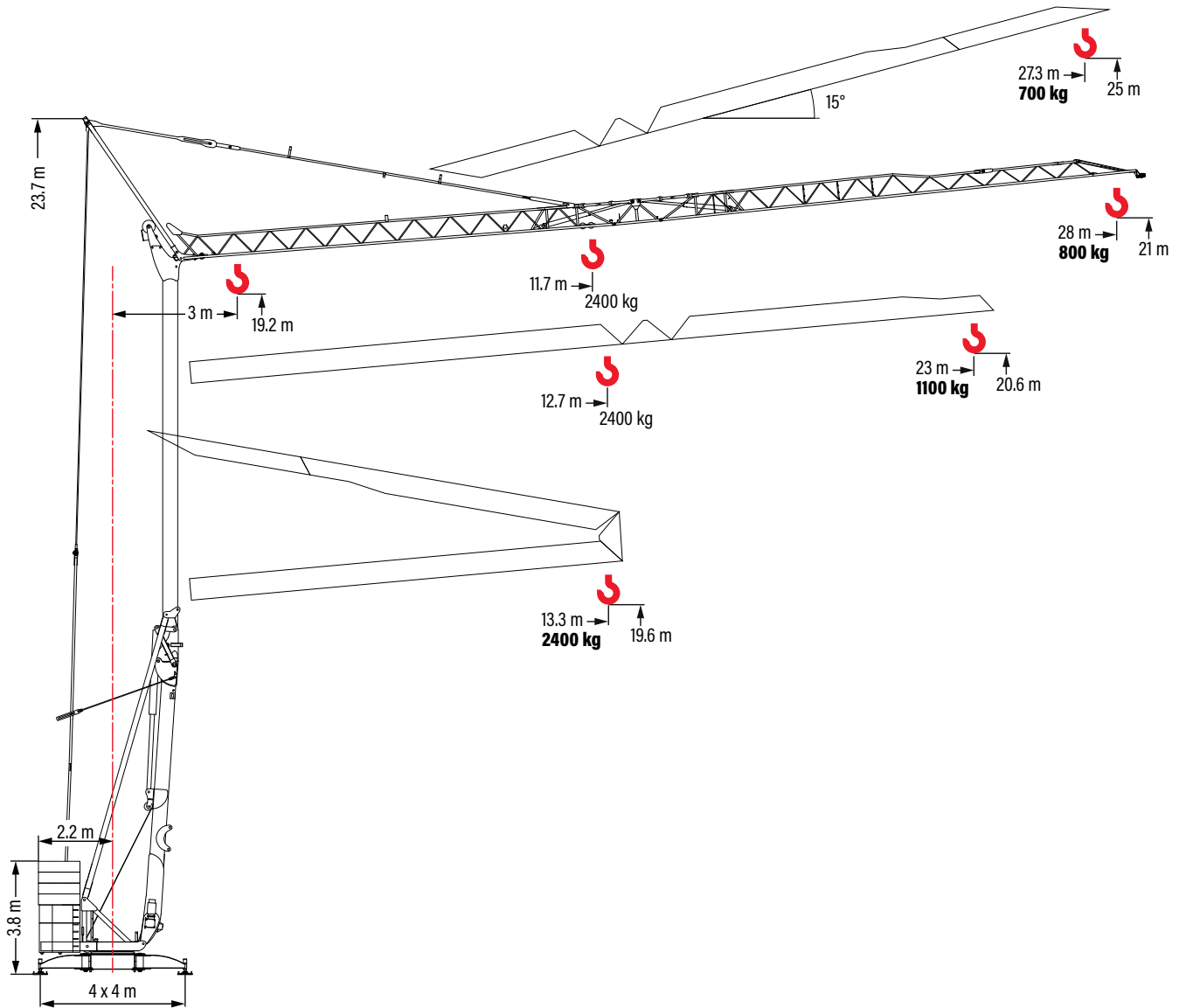


ACsys

# 828 RBI-V1

## Funzionamento

Operation - Betrieb - Exploitation - Accionamiento

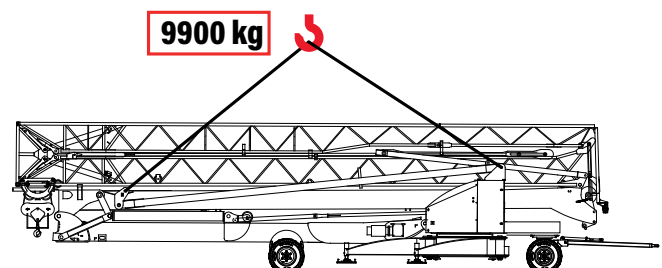
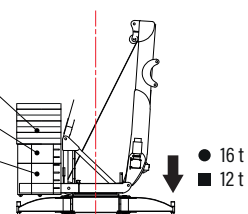


## Pesi e reazioni

Weights and reactions - Gewichte und Reaktionen - Poids et réactions - Pesos y reacciones

- Reazioni in servizio  
Reactions in service  
Reaktionskräfte in Betrieb  
Réactions en service  
Reacciones en servicio
- Reazioni fuori servizio  
Reactions out of service  
Reaktionskräfte außer Betrieb  
Réactions hors service  
Reacciones fuera de servicio

4 x 2400 kg	7 x 1250 kg
2 x 1300 kg	2 x 1300 kg
2 x 2200 kg	2 x 2200 kg
<b>Tot = 16600 kg</b>	<b>Tot = 15750 kg</b>



## Diagramma di portate

Load diagram - Lastkurven - Courbes de charges - Curvas de cargas

**5°**

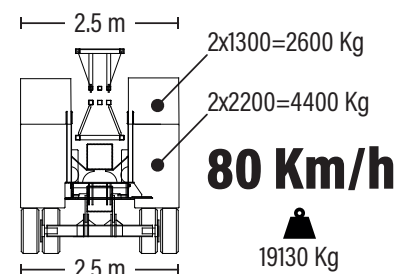
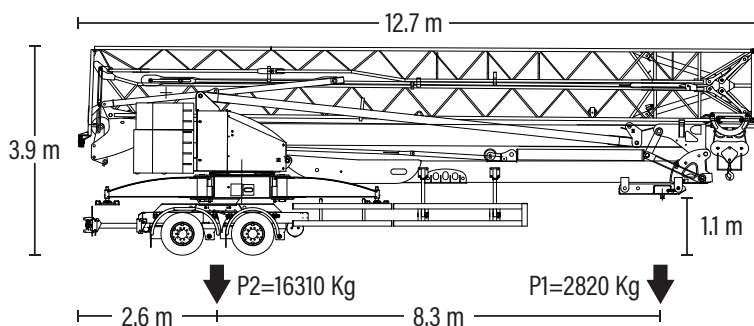
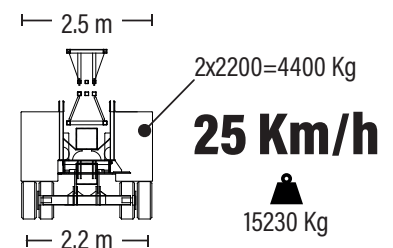
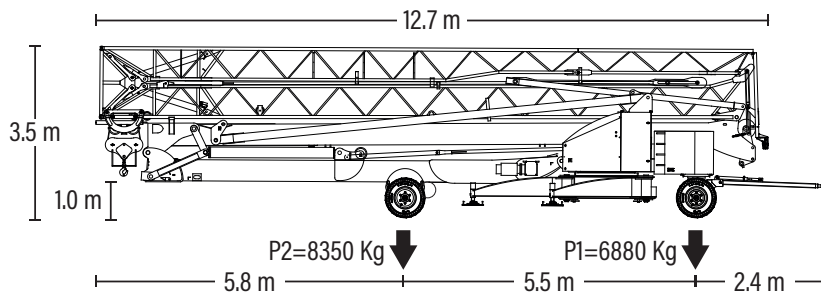
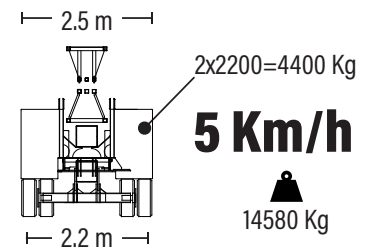
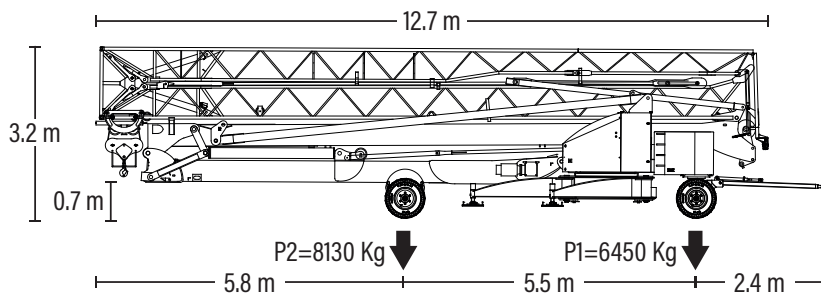
230-400 V	m	3	10	12	13.3	14	16	18	20	22	23	24	26	28		
<b>28.0 m</b>	2400 kg - 11.7 m	kg	2400		2310	2080	1960	1610	1420	1220	1100	1030	970	890	800	
<b>23.0 m</b>	2400 kg - 12.7 m	kg	2400			2290	2170	1810	1590	1380	1190	1100				
<b>13.3 m</b>	2400 kg - 13.3 m	kg	2400													

**15°**

230-400 V	m	3	27.3
<b>27.3 m</b>	700 kg - 27.3 m	kg	700

## Trasporto



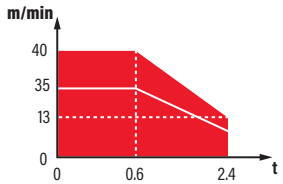
Transport - Transport - Transport - Transporte




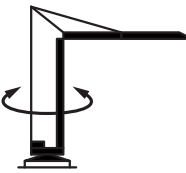
# 828 RBI-V1




## Meccanismi

Mechanisms - Antriebe - mécanismes - Mecanismos

	<b>V9.32</b> <b>6.6 kW</b>								
		400 V	m/min	4	13		32	40	
		230 V	m/min	↑	4		11	25	35
		230 V	m/min	↓	4		13	32	40
		t	2.4	2.4	1.0	0.6			

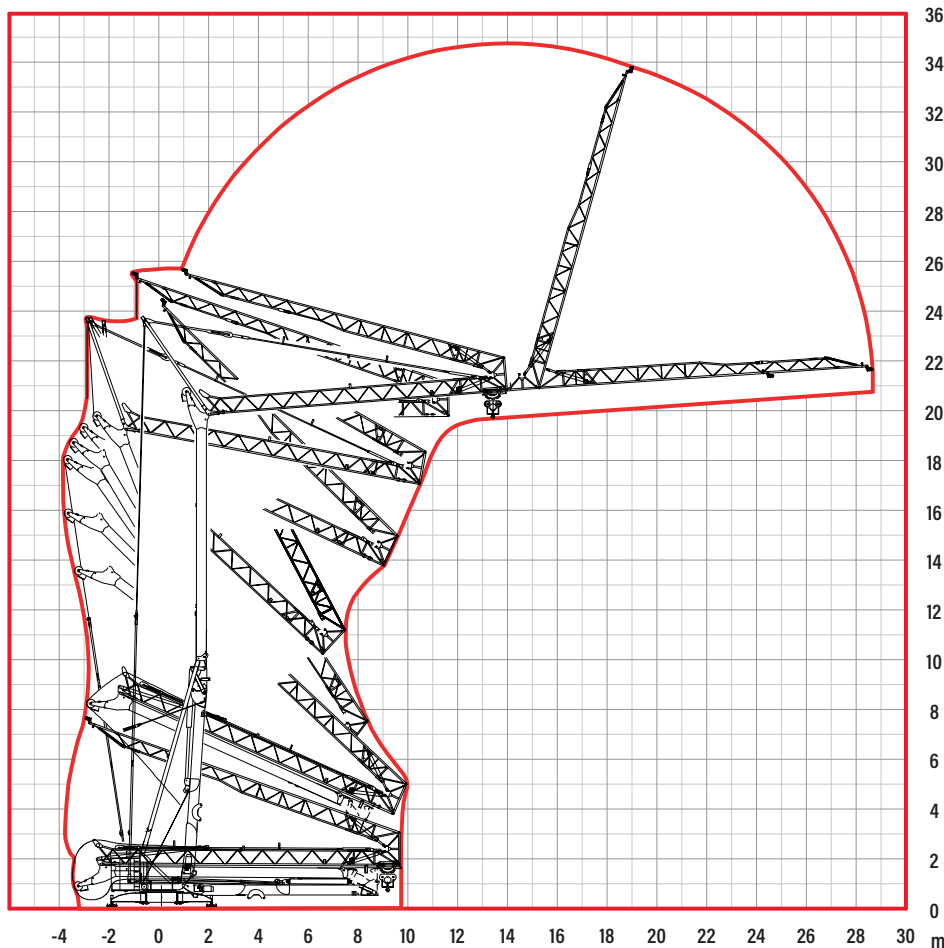
	0 <-> 30 m/min 2.2 kW
---	--------------------------

	0 <-> 0.8 rpm 2.2 kW
---	-------------------------

	230 V - 50 Hz: 2 kVA 
	400 V - 50 Hz: 17 kVA 

## Montaggio

Erection - Montage - Montage - Montaje



Documento commerciale non contrattuale.  
Per tutte le informazioni tecniche riferirsi alle corrispondenti istruzioni.

This commercial document is not legally binding. For any technical information, please refer to the corresponding instructions.

Unverbindliches Vertriebsdokument.  
Für technische Informationen, siehe die entsprechenden Anweisungen.

Ce document commercial n'est pas juridiquement contraignant. Pour toute information technique, veuillez vous référer aux instructions correspondantes.

Documento comercial no contractual.  
Para cualquier información técnica, ver la noticia correspondiente.



 Eco power: tecnologia risparmio consumi